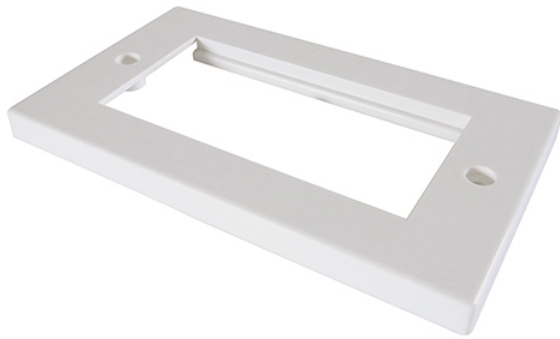




Double Faceplate for RJ45 Modules - 4 Module version 145 x 85mm - White

Brand: **connektgear**
Code: 90-0105
Box Qty: 400



Why do you need it?

You need to insert up to four standard RJ45 modules into a backbox that will be added to your network, and you want a durable and safe faceplate to do the job.

What does it do?

The double faceplate will hold up to four snap-in modules and can be fixed onto a standard double backbox with the fixing screws provided. This provides an easy install with no complicated wiring without compromising the quality of the install.

Product Details

- Suitable for Cat 5e, Cat 6 & LAN modules
 - To be used in conjunction with Connekt Gear's double back box
 - Colour matched with Connekt Gear's double back box
 - Includes fixing screws
 - Lifetime warranty
-
- Barcode: 5035624022492
-
- Outer dimensions: 145 x 85mm
 - Cut-out dimensions: 100 x 50mm
 - Colour: White
 - Barcode: 5035624022492

Packaging Specifications

- Packaging Type: Bag
- Packaging Dimensions: 160 x 245mm (W x H)
- Packaging Material: Plastic
- Packaging Weight: 0.0035Kg
- Product & Packaging Weight: 0.0350Kg
- Carton Dimensions: 350 x 260 x 240mm
- Carton Net Weight: 0.4Kg
- Carton Gross Weight: 18.4Kg
- Country of Origin: PR China
- Commodity Code: 3926909790

Whats In The Box

- 1 x Double Faceplate
- 2 x Screws

Product Information

- Barcode: 5035624022492
- Commodity Code: 3926909790
- Product Weight: 0.04