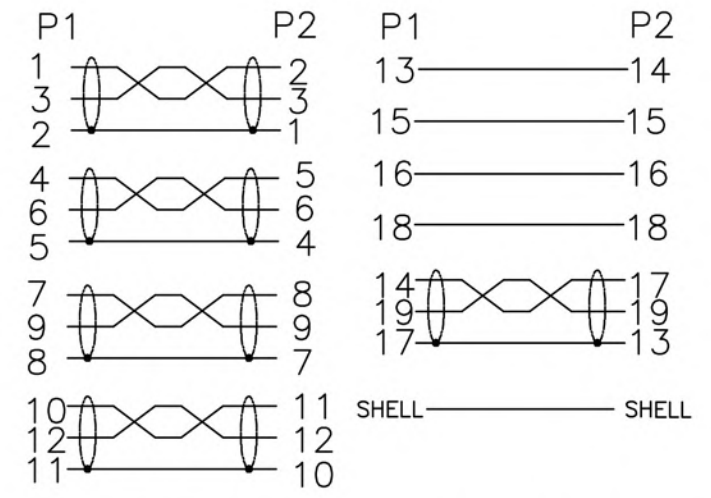


ELECTRONIC TEST:

- 1.OPEN/SHORT/INTERMITTENCE: 100%.
- 2.HI-POT: AC 150V 0.01S
- 3.INSULATION RESISTANCE:DC300V 0.01S 10MΩ(MIN)
- 4.CONDUCTIVE RESISTANCE:3 OHM (MAX)
- 5.Transmission rate:18G
- 6.HD-TV:4K*2K @60Hz

Pin OUT



| ⑤ | MOLDED | 45P BLACK PVC | | G |
|-----|-----------|---|------|------|
| ④ | MOLDED | LD-PE | | G |
| ③ | CONNECTOR | HDMI C Male Gold plated | 1 | PCS |
| ② | CONNECTOR | HDMI A Male Gold plated | 1 | PCS |
| ① | CABLE | (1/0.25*1P+1/0.25BC+AL)*5+1/0.25BC*4C+A+D(1/0.25BC)+B(80/0.12AL-MG) BLACK PVC OD:6.0±0.2MM PRINTING:High Speed HDMI® Cable with Ethernet | 2000 | MM |
| NO. | MATERIAL | DESCRIPTION | QTY. | UNIT |

| Ltemref | Quantity | Title/Name,designation,material,dimension etc | Article No./Reference | | |
|-------------|------------|---|-----------------------|--------------------|---------------|
| Designed by | Checked by | Approved by - date 18-01-2019 | File name | Date 18-01-2019 | Scale FREE |
| ANGLE: | | HDMI2.0 AM/CM 2.0M | | | |
| UNIT:MM | | | 26-7199 | Edition 1 | Sheet 1/1 |