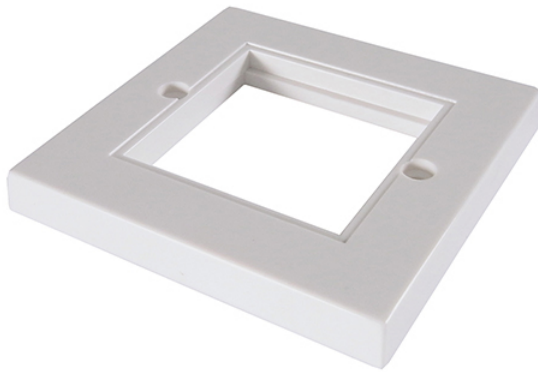




Single Faceplate for RJ45 Modules - 2 Module version 85 x 85mm - White

Brand: **connektgear**
Code: 90-0100
Box Qty: 500



Why do you need it?

You need to insert up to two standard RJ45 modules into a backbox that will be added to your network, and you want a durable and safe faceplate to do the job.

What does it do?

The single faceplate will hold up to two snap-in modules and can be fixed onto a standard single backbox with the fixing screws provided. This provides an easy install with no complicated wiring without compromising the quality of the install.

Product Details

- Suitable for Cat 5e, Cat 6 & LAN modules
- To be used in conjunction with Connekt Gear's single back box
- Colour matched with Connekt Gear's single back box
- Includes fixing screws
- Lifetime warranty

- Barcode: 5035624022447

- Outer dimensions: 85 x 85mm
- Cut-out dimensions: 50 x 50mm
- Colour: White
- Barcode: 5035624022447

Packaging Specifications

- Packaging Type: Bag
- Packaging Dimensions: 120 x 185mm (W x H)
- Packaging Material: Plastic
- Packaging Weight: 0.0035Kg
- Product & Packaging Weight: 0.0255Kg
- Carton Dimensions: 350 x 260 x 240mm
- Carton Net Weight: 0.4Kg
- Carton Gross Weight: 15.7Kg
- Country of Origin: PR China
- Commodity Code: 3926909790

Whats In The Box

- 1 x Single Faceplate
- 2 x Screws

Product Information

- Barcode: 5035624022447
- Commodity Code: 3926909790
- Product Weight: 0.03